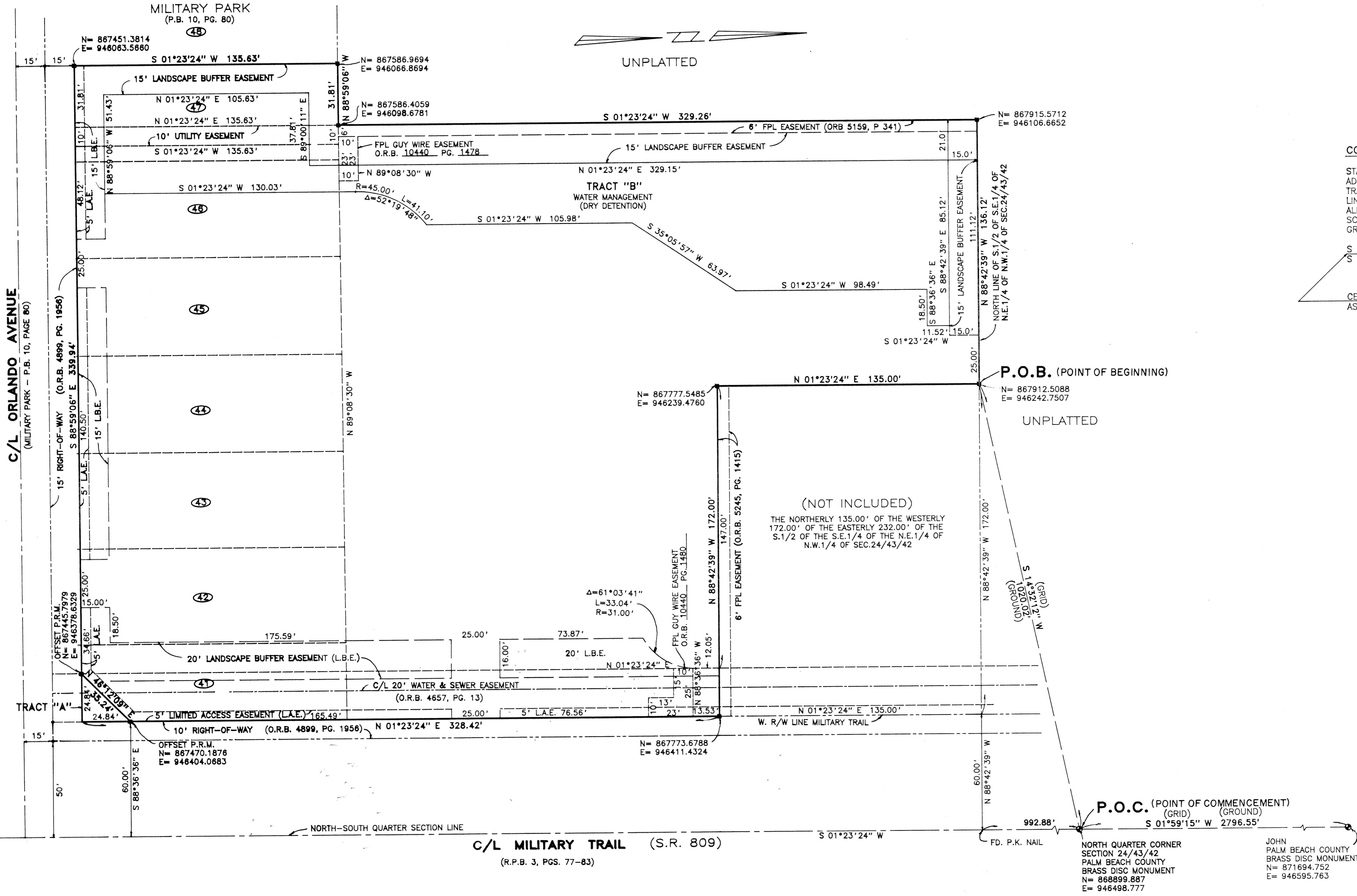


TARRYBROOKE SQUARE

A M.U.P.D.
 BEING A REPLAT OF LOTS 41 THROUGH 47, NICHOLS ADDITION NO. 2, MILITARY PARK,
 AS RECORDED IN PLAT BOOK 10, PAGE 80, PUBLIC RECORDS, PALM BEACH COUNTY, FLORIDA,
 AND A PORTION OF SOUTH ONE HALF OF SOUTHEAST QUARTER OF NORTHEAST QUARTER OF
 NORTHWEST QUARTER OF SECTION 24, TOWNSHIP 43 SOUTH, RANGE 42 EAST,
 PALM BEACH COUNTY, FLORIDA
 SHEET 2 OF 2 JULY 1998

STATE OF FLORIDA
 COUNTY OF PALM BEACH ss
 This Plat was filed for record at _____
 M. this day of _____ 19____
 and duly recorded in Plat Book No. _____
 on Page _____
 Clerk of the Circuit Court
 By _____ D.C.



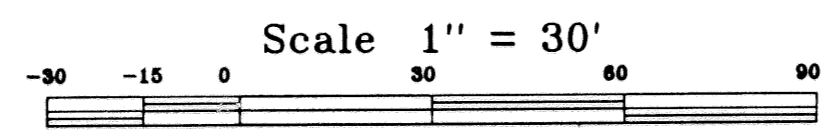
COORDINATE NOTE:
 STATE PLANE COORDINATES SHOWN ARE GRID DATUM, NAD 83 1990
 ADJUSTMENT, FLORIDA EAST ZONE, COORDINATE SYSTEM 1983 STATE PLANE,
 TRANSVERSE MERCATOR PROJECTION
 LINEAR UNIT = US SURVEY FEET
 ALL DISTANCES ARE GROUND
 SCALE FACTOR = 1.0000376
 GROUND FACTOR X SCALE DISTANCE = GRID DISTANCE

S 01°23'24" W (PLAT BEARING)
 S 01°23'14" W (GRID BEARING)
 CENTERLINE OF MILITARY TRAIL
 AS SHOWN HEREON

LEGEND

- P.C.P. = PERMANENT CONTROL POINT
- P.R.M. = PERMANENT REFERENCE MONUMENT
- I.R. & C. = IRON ROD & CAP
- I.R. = IRON ROD (NO NUMBER)
- C.M. = CONCRETE MONUMENT
- P.N. = SURVEY NAIL
- N.A.T.T. = NAIL & TIN TAB
- P.C. = POINT OF CURVATURE
- P.T. = POINT OF TANGENCY
- P.C.C. = POINT OF COMPOUND CURVATURE
- P.R.C. = POINT OF REVERSED CURVATURE
- P.I. = POINT OF INTERSECTION
- C. = CALCULATED
- M. = MEASURED
- P. = PLAT
- FND. = FOUND
- CONG. = CONCRETE
- R/W. = RIGHT OF WAY
- C/L. = CENTERLINE
- P.L. = PROPERTY LINE
- F.F. = FINISHED FLOOR
- EL. = ELEVATION
- PROP. = PROPOSED
- U/C. = UNDER CONSTRUCTION
- U.E. = UTILITY EASEMENT
- D.E. = DRAINAGE EASEMENT
- E.P. = EDGE OF PAVING
- L.A.E. = LIMITED ACCESS EASEMENT
- T.O.B. = TOP OF BANK
- R. = RADIUS
- L. = ARC LENGTH
- Δ. = CURVE DELTA
- M.H. = MANHOLE
- C.B. = CATCH BASIN
- F.H. = FIRE HYDRANT

SUBDIVISION: Tarrybrooke Square
 BOOK: 84
 PAGE: 19
 FLOOD MAP #: 1556
 FLOOD ZONE: B
 ZONING: CG15E
 SE: 84-1451
 TAZ: 1107
 PUD NAME: Tarrybrooke Square



RICHARD P. BREITENBACH, P.S.M.
 LAND SURVEYING SERVICES
 PHONE (561) 967-0065
 2540 PALMARITA ROAD WEST PALM BEACH, FL. 33406

TARRYBROOKE SQUARE